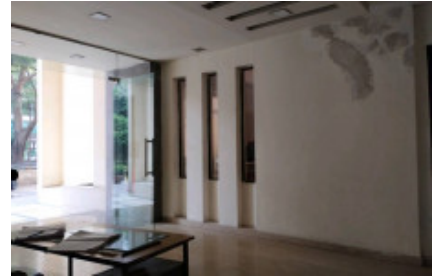


Eros Kenwood Towers

Kenwood Tower 1 Tower-C, Charmwood Village, Sector 39, Faridabad

28.49145391757, 77.288953769314



Kenwood Towers Overview

Location: Charmwood Village, Sector 39, Suraj Kund Badkhal Road, Faridabad, 121009

Developer: Eros Group

Project Size: 11 acres

Total Units: 264

Number of Towers: 3

Status: Ready to Move

Launch Date: June 1, 2005

Possession Date: December 1, 2008

Property Details

- **Design:** Kenwood Towers is designed to offer luxurious living with well-planned and elegantly appointed units. The project is set amidst lush greenery, providing a serene and peaceful environment.
- **Units:** The project comprises multiple residential units, all of which are ready for immediate occupancy.

Key Features

- **Community Environment:** The project boasts peaceful surroundings with ample green spaces, offering a relaxing and rejuvenating lifestyle.
- **Recreational Facilities:** The complex includes various facilities like a banquet hall and indoor games room, designed to enhance residents' quality of life.

Eros Kenwood Towers Price List

If you are looking for ready to move projects, Eros Kenwood Towers is a right choice for you. Here, a

4BHK Apartment is available at a starting price of Rs. 1.75 Cr.

Configuration	Size	Price
2BHK Apartment	1,283 sq.ft.	Rs. 95L
3BHK Apartment	1,200 sq.ft	Rs. 1.3Cr
3BHK Apartment	2,107 sq.ft	Rs. 1.45Cr

Overview

Property Type: Apartment	RERA ID: Not Available	County: India
City: Faridabad	Pin code: 121009	Super Built-up Area: 1283–2107sq.ft
Configuration (BHK): 2,3,4	Sale price: ₹90L–1.45Cr	

Amenities

- ✓ Air conditioning
- ✓ Internet
- ✓ Balcony
- ✓ Lift
- ✓ Pool
- ✓ Parking
- ✓ Gymnasium
- ✓ Gas Pipeline
- ✓ Intercom Facility
- ✓ Guest Parking
- ✓ Multiple Purpose Hall
- ✓ Power Backup
- ✓ Park/Garden
- ✓ Security

Distances

Metro 4km	Healthcare 0.3km	Restaurant 0.4km	School 0.2km
Mall 0.8km	Cinemas 3.7km	Park 0.5km	



Contact Details

sales@townmanor.in

+91-0120-4420450, 7042888903

Townmanor Technologies Pvt Ltd.