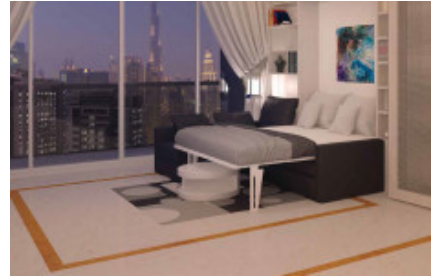


## Danube Bayz

Business Bay, Dubai

25.181525046833, 55.279145653968



Danube Bayz, located in the heart of Business Bay, is a luxury residential project by Danube Real Estate Development Company, offering fully furnished studios, 1, 2, and 3-bedroom apartments. The development is known for its upscale design, featuring luxurious materials and furnishings sourced from Milan, Spain, and Italy. Situated near the Dubai Canal, Bayz provides an exceptional living experience with its premium amenities and prime location.





### Key Features and Highlights

- **Luxurious Design:** Apartments are crafted with luxurious marble, upscale kitchens, and premium furnishings, offering a sophisticated and stylish living environment.
- **Prime Location:** Located in Business Bay, Bayz Tower offers easy access to key landmarks such as Dubai Mall, Downtown, and Dubai Canal.
- **Fully Furnished Apartments:** Each unit comes fully furnished with a fully equipped kitchen, and the living room can be transformed into a bedroom with specially designed furniture.

### Key Amenities

- Large swimming pool
- Children's area
- Barbecue area
- First-class wellness facilities
- Sauna and steam rooms

Danube Bayz in Business Bay stands out as a premier residential option for those seeking luxury and convenience in Dubai. With its fully furnished apartments, high-end design, and a range of top-tier amenities, Bayz offers a refined living experience. Its strategic location near Dubai's major attractions, combined with the thoughtful design of each unit, makes it an ideal choice for a modern, upscale lifestyle.

| Floor Plan  | Category   | Unit Type | Floor Details                                   | Sizes                               | Type      |
|---|------------|-----------|---|-------------------------------------|-----------|
|  | STUDIO     | -         | STUDIO-Type-SA toSTUDIO-TYPE-SB                 | 412.58Sq Ft to 472.54 Sq Ft Sq Ft   | Apartment |
|  | 1 Bedroom  | -         | 1 BED UNIT - TYPE - 1A to1 BED UNIT - TYPE - 1E | 551.01Sq Ft to 881.36 Sq Ft Sq Ft   | Apartment |
|  | 2 Bedrooms | -         | 2 BED UNIT - TYPE - 2A to2 BED UNIT - TYPE - 2B | 1141.31Sq Ft to 1148.09 Sq Ft Sq Ft | Apartment |
|  | 3 Bedrooms | -         | 3 BED UNIT - TYPE - 3A                          | 1365.41Sq Ft to 1365.41 Sq Ft Sq Ft | Apartment |

## Overview

|                                      |                              |                                    |
|--------------------------------------|------------------------------|------------------------------------|
| Property Type: Apartment             | County: United Arab Emirates | City: Dubai                        |
| Super Built-up Area: 412 – 1365sq.ft | Sale price: ₹ 1.5 Cr Onwards | UAE Sale Prices: AED0.76 M Onwards |

## Amenities

|                |               |             |             |
|----------------|---------------|-------------|-------------|
| ✓ Lift         | ✓ Pool        | ✓ Gymnasium | ✓ CCTV      |
| ✓ Power Backup | ✓ Park/Garden | ✓ Security  | ✓ Play Area |

## Distances

|             |                  |                  |              |
|-------------|------------------|------------------|--------------|
| Metro 4.1km | Healthcare 1.6km | Restaurant 0.5km | School 0.5km |
| Mall 1.2km  |                  |                  |              |





**Contact Details**

[sales@townmanor.in](mailto:sales@townmanor.in)

+91-0120-4420450, 7042888903

**Townmanor Technologies Pvt Ltd.**

